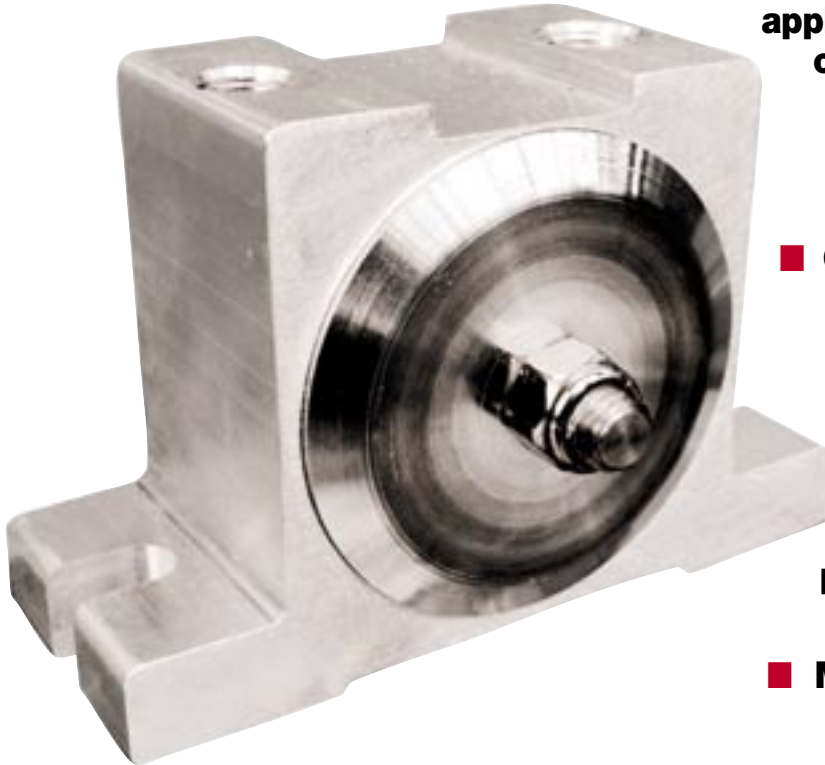


# VIBCO® Vibrators

## Millennium Turbine Line of Sanitary Pneumatic Turbine Vibrators

### Model MLT-250™



- **Ideal for sanitary applications even in harsh chemical environments**

- **No lubrication - prelubricated for life, maintenance free**

- **QUIET - no more noise than an electric motor 68-75 dB**

- **Slotted bolt pattern that fits many bolt centers**

- **Threaded exhaust ports for maintaining a clean environment**

- **Many different sanitary finishes available**

The NEW Millennium Line of Sanitary Pneumatic Turbine (MLT) Vibrators is your solution for all sterile/clean applications. The line consists of the MLT-130, 190, 250 and 320; all are designed for the most adverse applications. Their extruded aluminum housings, stainless steel shafts, and aircraft aluminum covers, give these vibrators additional strength, durability and long life. They are also designed with slotted mounting holes for easy installation on many bolt patterns and tapped exhaust ports that allow exhausting air to be piped off to insure a clean environment. These units can be supplied with a variety of sanitary finishes such as: high gloss dairy white industrial enamel, anodized or unpainted aluminum.

The MLT Line is ideal for applications in industries that require a sanitary vibrator. Such industries include: food, beverage, and pharmaceutical industries.

Model MLT-250, as part of the millennium Turbine Line of Vibrators has high speed sealed bearings that are pre-lubricated for life making it maintenance free. It has an operating range of 30-80 PSI and a maximum operating temperature of 250°F or 120°C. Decibel readings well below OSHA limits, as low as 68dB on A-scale at 1 meter with no more sound than an electric motor. The patented MLT-turbine vibrator draws 50% less air than a comparable ball vibrator and lasts three times longer. Like the rest of VIBCO's products these are 100% made in the USA and competitively priced.

**VIBCO® Vibrators: 1-800-633-0032**

**Visit us at [www.VIBCO.com](http://www.VIBCO.com)**

**Call for your order today.**

**MILLENNIUM TURBINE Line Sanitary Vibrators**

# Millennium Turbine Vibrators

## TECHNICAL HIGHLIGHTS

- Pressure Range 30 to 80 PSI
- Operating Temp. Max 250°F, 120°C
- dB reading as low as 68dB on A scale at 1 meter
- Air consumption 50% less than comparable ball vibrators
- Bearings are prelubricated for life

## TECHNICAL DATA

| MODEL   | WEIGHT |      | 60 PSI*** |     | 80 PSI*** |     | Force |      |    | Max. Lbs.**<br>in Bin |
|---------|--------|------|-----------|-----|-----------|-----|-------|------|----|-----------------------|
|         | lbs.   | kg.  | VPM*      | CFM | VPM*      | CFM | lbs.  | N    | dB |                       |
| MLT-130 | 1      | .45  | 8600      | 4.5 | 10500     | 5.5 | 75    | 334  | 68 | 750                   |
| MLT-190 | 2      | .91  | 5500      | 7.5 | 7200      | 8.5 | 270   | 1200 | 71 | 2700                  |
| MLT-250 | 2.4    | 1.08 | 5200      | 8   | 7200      | 9   | 480   | 2136 | 72 | 4800                  |
| MLT-320 | 4.5    | 2.04 | 5500      | 9   | 6800      | 10  | 600   | 2669 | 70 | 5300                  |

\* Vibrations per minute

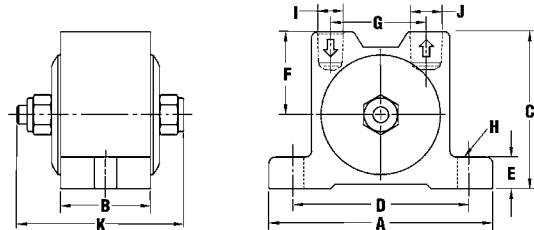
\*\* Rule of thumb for sizing one lb. of vibrator force for each 10 lbs. of material in sloped portion of bin.

\*\*\* Test data are close to actual performance data of the unit on a typical application. The test data obtained on a heavy laboratory test block cannot be duplicated on a typical application. We feel it is more important for the customer to measure the actual frequency of the unit on the application and know the unit is performing to specifications than not knowing what performance path to expect, or worst believing the test block data should be obtained.

## DIMENSIONS

|         |      | A     | B       | C      | D     | E     | F       | G       | H*  | I          | J          | K     |
|---------|------|-------|---------|--------|-------|-------|---------|---------|-----|------------|------------|-------|
| MLT-130 | INCH | 3-1/2 | 1       | 2-1/2  | 2/3/4 | 1/2   | 1-3/8   | 1-7/16  | 1/4 | 1/8-28 NPT | 1/4-18 NPT | 1-7/8 |
|         | MM   | 89    | 25      | 64     | 70    | 13    | 35      | 37      | 6   |            |            | 48    |
| MLT-190 | INCH | 4-1/2 | 1-13/16 | 3-3/16 | 3-1/2 | 5/8   | 1-11/16 | 1-15.16 | 3/8 | 1/4-18 NPT | 3/8-18NPT  | 3-3.8 |
|         | MM   | 114   | 46      | 81     | 89    | 16    | 43      | 49      | 10  |            |            | 86    |
| MLT-250 | INCH | 5     | 2       | 3-3/8  | 4     | 5/8   | 1-11/16 | 2-1/4   | 3/8 | 1/4-18 NPT | 3/8-18 NPT | 3-1/2 |
|         | MM   | 127   | 51      | 86     | 102   | 16    | 43      | 57      | 10  |            |            | 89    |
| MLT-320 | INCH | 6-3/8 | 2       | 4-1/4  | 5     | 13/16 | 2-3/16  | 2-13/16 | 1/2 | 3/8-18 NPT | 1/2-14 NPT | 4     |
|         | MM   | 162   | 51      | 108    | 127   | 21    | 56      | 71      | 12  |            |            | 102   |

\*BOLT SIZE



We're The **SILENT** Vibrator Guys.®



### VIBCO, INC.

75 Stilson Road, P.O. Box 8  
Wyoming, RI 02898  
E-Mail: [vibrators@vibco.com](mailto:vibrators@vibco.com)  
Phone: (401) 539-2392  
(800) 633-0032  
FAX: (401) 539-2584  
[www.VIBCO.com](http://www.VIBCO.com)

**West Coast:**  
Phoenix, Arizona 85254  
Phone: (480) 596-1809  
(800) 633-0032  
FAX: (480) 596-1614

**Canada:**  
2215 Dunwin Drive  
Mississauga, Ont.L5L 1X1  
Phone: (905) 828-4191  
(800) 465-9709  
FAX: (905) 828-5015

**SEE US AT [www.VIBCO.com](http://www.VIBCO.com)**

MLT2500307 - VIBCO, INC.